



For more details of our products, please log into
www.lansancable.net

Information in this catalogue is correct at the time of
printing. LANSAN International Limited reserves the right
to modify all products specifications without prior notice
and not liable for any errors contained.

Innovate Efficient Connectivity

Complete Your Copper System
In One-Stop Solution





Company Profile

LANSAN was founded in 1992 , starting with power cable and more than 20-year experiences in cable production, has provides range of products for Structured Cabling System (SCS) , included copper cable system (Category 5e, 6, 6A)voice system, fiber optical system products.

LANSAN is located in Shenzhen, China with one facility around 8000 square meters . Based on high quality manpower and professional experiences in this industrials . We have the confidence and ability to design and manufacture various products for customers.

Own R&D team to improve our products according to real need from End User, your request is our goal!

LANSAN can be your trusted consultant to handle Data Center, Enterprise and Industrial intelligent structured cabling system.

Contents

New Products	01/02
QT - Quick Installation Tool.....	01/02
SCS - Copper System Solutions	03/08
LC - LAN Cables	09/14
PC - Patch Cords	15/20
KJ - Keystone Jacks	21/26
PP - Patch Panels	27/28
FP - Faceplates	29/30
Contacts	32

NEW PRODUCTS!

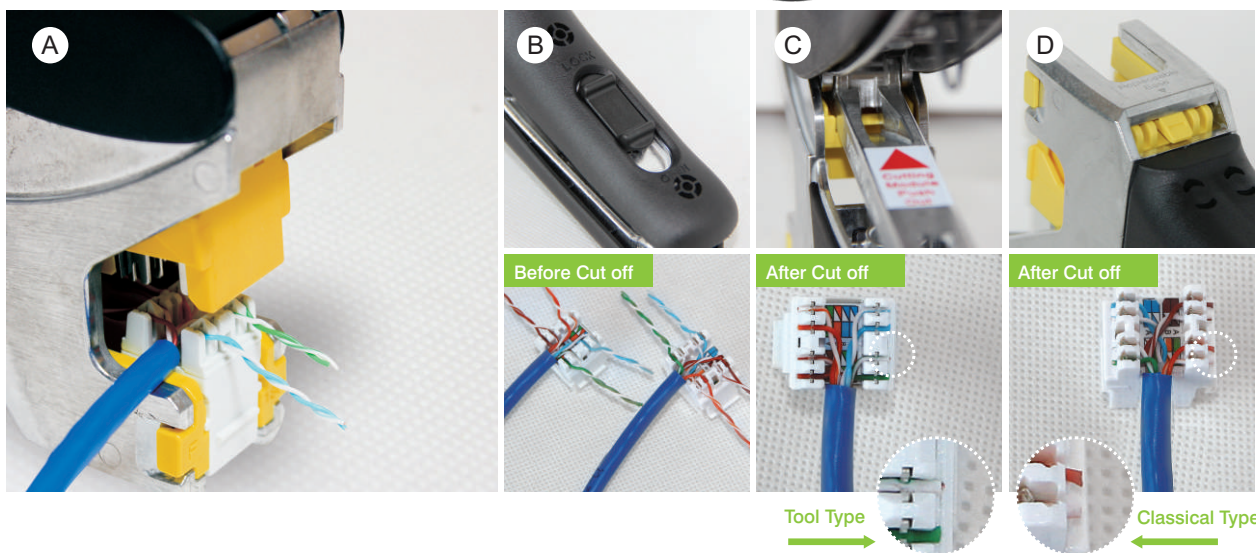
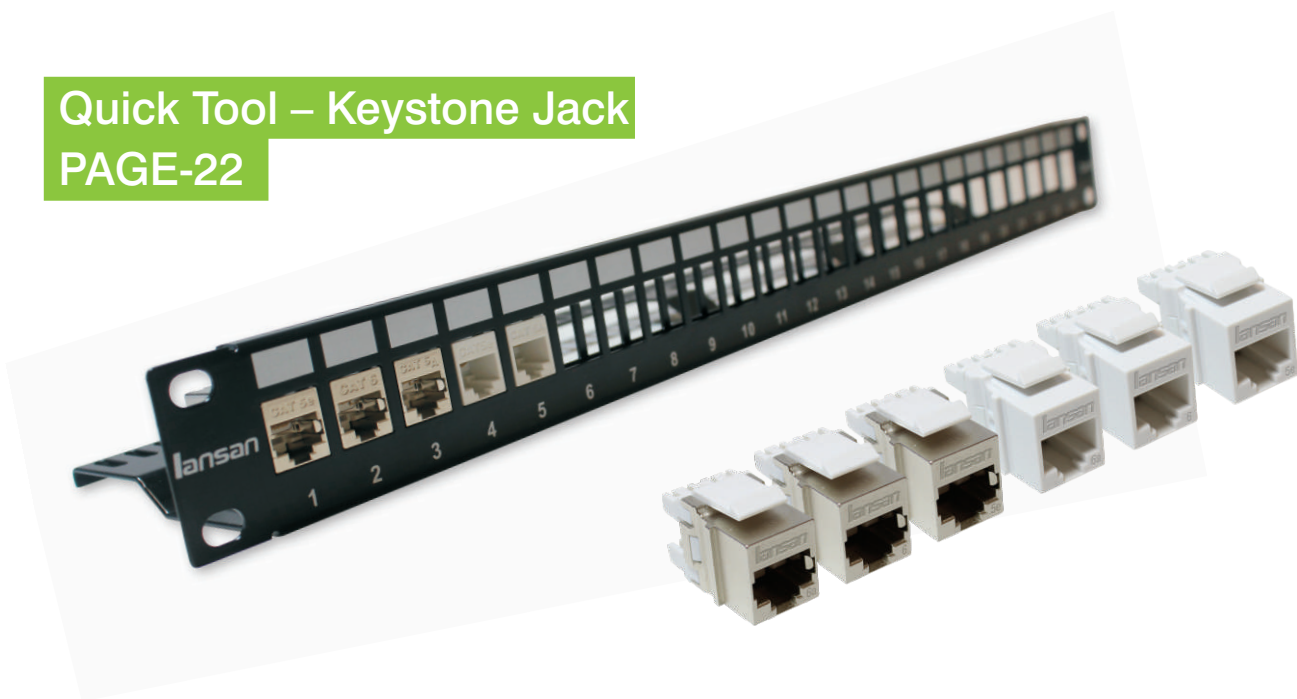
TOOL SOLUTION | Quick Installation Tool



FEATURES

- * Universal for LANSAN Quick Tool type Jacks
- * Extra Back up Modular
- * Punch down Stopper Design
- * Lightweight Humanized Design
- * Termination / Cutting one Design

Quick Tool – Keystone Jack PAGE-22



DESCRIPTION

LANSAN Quick Installation Tool provides termination and cut off in seconds. Universal modular for full series quick tool type keystone jack, maximum improve performance and minimum insertion loss, Avoiding mistakes in most efficient way.

ORDERING INFORMATION

Part No.	Description
LTL-V-01	Crimping Tool, Jack Type, 180 degree
LTL-01	Stripping Tool - Simple
LK6A-006A	LS-6A Cat.6A Keystone Jack, Unshield 180 degree, white, Tool Type
LK6AS-006A	LS-6A Cat.6A Keystone Jack, Shield 180 degree, Tool Type
LK6-006	LS-6 Cat.6 Keystone Jack, Unshield 180 degree, white, Tool Type
LK6S-006	LS-6 Cat.6 Keystone Jack, Shield 180 degree, Tool Type
LK5E-005E	LS-5E Cat.5E Keystone Jack, Unshield 180 degree, white, Tool Type
LK5ES-005E	LS-5E Cat.5E Keystone Jack, Shield 180 degree, Tool Type



COPPER SYSTEM SOLUTION | Category 6A

Category 6A U/UTP 10G Solution

UNSHIEDED COPPER CABLING SYSTEM

DESCRIPTION
LANSAN Category 6A U/UTP 10 G Un-Shield solution provide higher transmission performance, guaranteed to 500Mhz and meets TIA568 C.2 specification.
Combined with Un-Shield CAT 6A Keystone Jack, Patch Cords, and Patch Panel, it provides excellent Alien Crosstalk suppression.
The Solution is for hospital, government, manufacturing and other environments where EMI may be present and data security is paramount.

FEATURES
* Independently tested and verified by ETL * Humanized Design
STANDARDS COMPLIANCE
* TIA 568 C.2 * ISO 11801 CLASS EA * UL Listed * 10G BASE-T Networks supported

ORDERING INFORMATION

Part No.	Description
L096A **	LS-6A U/UTP Cat.6A PVC CM Green 305m/Box
L096AL **	LS-6A U/UTP Cat.6A LSZH Green 305m/ Box
LK6A-06A	LS-6A Cat.6A Keystone Jack, Unshield 180 degree, white
LK6A-006A	LS-6A Cat.6A Keystone Jack, Unshield 180 degree, white, Tool Type
LHD6A24	1HU Blank Panel 24P Un-Shield W/ Cat 6A Keystone Jack
LHD024	1HU Blank Panel 24P Un-Shield
LC6A-XXF**	LS-6A F/UTP Patch Cord PVC CM ** XX M
LC6AR-XXF**	LS-6A F/UTP Patch Cord PVC CMR ** XX M
LC6AP-XXF**	LS-6A F/UTP Patch Cord PVC CMP ** XX M
LC6AL-XXAF**	LS-6A F/UTP Patch Cord LSZH ** XX M

XX indicated to length, standard length 1m(01) 2m(02) 3m(03) 5m(05)
** indicated to color, if need other color or length, please indicate in order



Category 6A F/FTP 10G Solution

SHIEDED COPPER CABLING SYSTEM

DESCRIPTION
LANSAN Category 6A F/FTP 10 G Shield solution provide higher level of security and protection for sensitive environments.
CAT 6A F/FTP Cable has guaranteed performance to 500Mhz and meets TIA568 C.2 specification.
Combined with Shield CAT 6A Keystone Jack, Patch Cords, and Patch Panel, it provides excellent Alien Crosstalk suppression.
The Solution is for hospital, government, manufacturing and other environments where EMI may be present and data security is paramount.

FEATURES
* Independently tested and verified by ETL * Humanized Design
STANDARDS COMPLIANCE
* TIA 568 C.2 * ISO 11801 CLASS EA * UL Listed * 10G BASE-T Networks supported

ORDERING INFORMATION

Part No.	Description
L096AF2 **	LS-6A F/FTP Cat.6A PVC CM Green 305m/Drum
L096ALF2 **	LS-6A F/FTP Cat.6A LSZH Green 305m/Drum
LK6AS-06A	LS-6A Cat.6A Keystone Jack, Shield 180 degree, Tool Free
LK6AS-006A	LS-6A Cat.6A Keystone Jack, Shield 180 degree, white, Tool Type
LHD6A24S	1HU Blank Panel 24P Shield W/ Cat 6A Keystone Jack
LHD024S	1HU Blank Panel Shield 24P
LC6AF2-XXF**	LS-6A F/FTP Patch Cord PVC CM ** XX M
LC6AF2R-XXF**	LS-6A F/FTP Patch Cord PVC CMR ** XX M
LC6AF2P-XXF**	LS-6A F/FTP Patch Cord PVC CMP ** XX M
LC6AF2L-XXAF**	LS-6A F/FTP Patch Cord LSZH ** XX M

XX indicated to length, standard length 1m(01) 2m(02) 3m(03) 5m(05)
** indicated to color, if need other color or length, please indicate in order



COPPER SYSTEM SOLUTION | Category 6

Category 6 U/UTP 250Mhz Solution

UNSHIEDED COPPER CABLING SYSTEM

DESCRIPTION
LANSAN Category 6 U/UTP 250Mhz Un-Shield solution provide higher performance and more stable transmission rate than Category 5E.
CAT 6 U/UTP Cable has guaranteed performance to 500Mhz and meets TIA568 C.2 specification.
Combined with Un-Shield CAT 6 Keystone Jack, Patch Cords, and Patch Panel, it provides excellent Alien Crosstalk suppression.
The Solution is for hospital, government, manufacturing and other environments.

FEATURES
<ul style="list-style-type: none">* Independently tested and verified by ETL* Humanized Design* Full series Keystone Jack supported* Quick Installation design available
STANDARDS COMPLIANCE
<ul style="list-style-type: none">* TIA 568 C.2* ISO 11801 CLASS E* UL Listed

ORDERING INFORMATION

Part No.	Description
L096 **	LS-6 U/UTP Cat.6 PVC CM Blue 305m/Box
L096L **	LS-6 U/UTP Cat.6 LSZH Green 305m/ Box
LK6-06	LS-6 Cat.6 Keystone Jack, Unshield 180 degree, white
LK6-006	LS-6A Cat.6A Keystone Jack, Shield 180 degree, white, Tool Type
LHD624	1HU Blank Panel 24P Un-Shield W/ Cat 6 Keystone Jack
LHD024	1HU Blank Panel 24P Un-Shield
LC6-XXF**	LS-6 U/UTP Patch Cord PVC CM ** XX M
LC6R-XXF**	LS-6 U/UTP Patch Cord PVC CMR ** XX M
LC6P-XXF**	LS-6 U/UTP Patch Cord PVC CMP ** XX M
LC6L-XXAF**	LS-6 U/UTP Patch Cord LSZH ** XX M

XX indicated to length, standard length 1m(01) 2m(02) 3m(03) 5m(05)
** indicated to color, if need other color or length, please indicate in order

WT GY BK RD YL GN BL

Category 6 F/UTP 250Mhz Solution

SHIEDED COPPER CABLING SYSTEM

DESCRIPTION
LANSAN Category 6 F/UTP 250Mhz Shield solution provide higher level of security and protection for sensitive environments.
CAT 6 F/UTP Cable has guaranteed performance to 500Mhz and meets TIA568 C.2 specification.
Combined with Shield CAT 6 Keystone Jack, Patch Cords, and Patch Panel, it provides excellent Alien Crosstalk suppression.
The Solution is for hospital, government, manufacturing and other environments where EMI may be present and data security is paramount.

FEATURES
<ul style="list-style-type: none">* Independently tested and verified by ETL* Humanized Design* Full series Keystone Jack supported* Quick Installation design available
STANDARDS COMPLIANCE
<ul style="list-style-type: none">* TIA 568 C.2* ISO 11801 CLASS E* UL Listed

ORDERING INFORMATION

Part No.	Description
L096F **	LS-6 F/UTP Cat.6 PVC CM Blue 305m/Drum
L096LF **	LS-6 F/UTP Cat.6 LSZH Green 305m/Drum
LK6S-06	LS-6 Cat.6 Keystone Jack, Shield 180 degree, Tool Free
LK6S-006	LS-6 Cat.6 Keystone Jack, Shield 180 degree, Tool Type
LHD624S	1HU Blank Panel 24P Shield W/ Cat 6 Keystone Jack
LHD024S	1HU Blank Panel 24P Shield
LC6F-XXF**	LS-6 F/UTP Patch Cord PVC CM ** XX M
LC6FR-XXF**	LS-6 F/UTP Patch Cord PVC CMR ** XX M
LC6FP-XXF**	LS-6 F/UTP Patch Cord PVC CMP ** XX M
LC6FL-XXAF**	LS-6 F/UTP Patch Cord LSZH ** XX M

XX indicated to length, standard length 1m(01) 2m(02) 3m(03) 5m(05)
** indicated to color, if need other color or length, please indicate in order

WT GY BK RD YL GN BL



COPPER SYSTEM SOLUTION | Category 5E

Category 5E U/UTP 100Mhz Solution

UNSHIEDED COPPER CABLING SYSTEM

DESCRIPTION
LANSAN Category 5E U/UTP 100Mhz Un-Shield solution provide higher performance and more stable transmission rate than Category 5.
CAT 5E U/UTP Cable has guaranteed performance to 100Mhz and meets TIA568 C.2 specification.
Combined with Un-Shield CAT 5E Keystone Jack Patch Cords, and Patch Panel, it provides excellent and stable performance.
The Solution is for hospital, government manufacturing and other environments.

FEATURES
* Independently tested and verified by ETL
* Humanized Design
* Full series Keystone Jack supported
* Quick Installation design available

STANDARDS COMPLIANCE
* TIA 568 C.2
* ISO 11801 CLASS D
* UL Listed

ORDERING INFORMATION

Part No.	Description
L095E **	LS-5E U/UTP Cat.5E PVC CM Grey 305m/Box
L095EL **	LS-5E U/UTP Cat.5E LSZH Green 305m/ Box
LK5E-06	LS-5E Cat.5E Keystone Jack, Un-Shield 180 degree, white
LK5E-006	LS-5E Cat.5E Keystone Jack, Un-Shield 180 degree, Tool Type
LHD5E24	1HU Blank Panel 24P Un-Shield W/ Cat 5E Keystone Jack
LHD024	1HU Blank Panel 24P Un-Shield
LC5E-XXF**	LS-5E U/UTP Patch Cord PVC CM ** XX M
LC5ER-XXF**	LS-5E U/UTP Patch Cord PVC CMR ** XX M
LC5EP-XXF**	LS-5E U/UTP Patch Cord PVC CMP ** XX M
LC5EL-XXAF**	LS-5E U/UTP Patch Cord LSZH ** XX M

XX indicated to length, standard length 1m 2m 3m 5m
** indicated to color, if need other color or length, please indicate in order

WT GY BK RD YL GN BL

Category 5E F/UTP 100Mhz Solution

SHIEDED COPPER CABLING SYSTEM

DESCRIPTION
LANSAN Category 5E F/UTP 100Mhz Shield solution provide basic level of security and protection for sensitive environments.
CAT 5E F/UTP Cable has guaranteed performance to 100Mhz and meets TIA568 C.2 specification.
Combined with Shield CAT 5E Keystone Jack Patch Cords, and Patch Panel, it provides excellent and stable performance.
The Solution is for hospital, government manufacturing and other environments.

FEATURES
* Independently tested and verified by ETL
* Humanized Design
* Full series Keystone Jack supported
* Quick Installation design available

STANDARDS COMPLIANCE
* TIA 568 C.2
* ISO 11801 CLASS D
* UL Listed

ORDERING INFORMATION

Part No.	Description
L095EF **	LS-5E F/UTP Cat.5E PVC CM Grey 305m/Drum
L095ELF **	LS-5E F/UTP Cat.5E LSZH Green 305m/Drum
LK5ES-05E	LS-5E Cat.5E Keystone Jack, Shield 180 degree, white
LK5ES-005E	LS-5E Cat.5E Keystone Jack, Shield 180 degree, Tool Type
LHD5E24S	1HU Blank Panel 24P Shield W/ Cat 5E Keystone Jack
LHD024S	1HU Blank Panel 24P Shield
LC5EF-XXF**	LS-5E F/UTP Patch Cord PVC CM ** XX M
LC5EFR-XXF**	LS-5E F/UTP Patch Cord PVC CMR ** XX M
LC5EFP-XXF**	LS-5E F/UTP Patch Cord PVC CMP ** XX M
LC5EFL-XXAF**	LS-5E F/UTP Patch Cord LSZH ** XX M

XX indicated to length, standard length 1m(01) 2m(02) 3m(03) 5m(05)
** indicated to color, if need other color or length, please indicate in order

WT GY BK RD YL GN BL

LAN CABLE Category 6A Un-shield



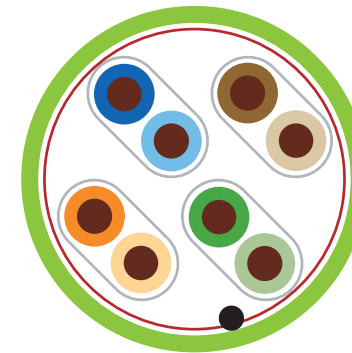
Category 6A U/UTP 10G Cable UNSHIEDED COPPER CABLING SYSTEM

DESCRIPTION	SPECIFICATION														
<p>LANSAN Category 6A U/UTP 10G Cable support high speed Enterprise and Data Center applications</p> <p>Cables designed in Saw-tooth structure to against Alien Crosstalk.</p> <p>Combined with Un-Shield Keystone, Patch Cords and Patch Panel, it provides excellent compatible performance.</p>	<table> <tr> <td>Conductor</td><td>23AWG, Solid Copper</td></tr> <tr> <td>Insulation</td><td>Foamed Polyethylene (FPE)</td></tr> <tr> <td>Outer Sheath</td><td>Low Smoke Zero Halogen (LSZH)</td></tr> <tr> <td>Installation Temperature</td><td>0°C ~ +50°C</td></tr> <tr> <td>Operating Temperature</td><td>-20°C ~ +60°C</td></tr> <tr> <td>Installation Min Bend Radius</td><td>70mm</td></tr> <tr> <td>Operating Min Bend Radius</td><td>40mm</td></tr> </table>	Conductor	23AWG, Solid Copper	Insulation	Foamed Polyethylene (FPE)	Outer Sheath	Low Smoke Zero Halogen (LSZH)	Installation Temperature	0°C ~ +50°C	Operating Temperature	-20°C ~ +60°C	Installation Min Bend Radius	70mm	Operating Min Bend Radius	40mm
Conductor	23AWG, Solid Copper														
Insulation	Foamed Polyethylene (FPE)														
Outer Sheath	Low Smoke Zero Halogen (LSZH)														
Installation Temperature	0°C ~ +50°C														
Operating Temperature	-20°C ~ +60°C														
Installation Min Bend Radius	70mm														
Operating Min Bend Radius	40mm														
FEATURES	STANDARDS COMPLIANCE														
<ul style="list-style-type: none"> * Independently tested and verified by ETL * Guaranteed to meet TIA 568 C.2 and ISO/IEC 11801 specifications * Saw-tooth Structure design 	<ul style="list-style-type: none"> * TIA 568 C.2 * ISO 11801 CLASS EA * UL Listed 														

ORDERING INFORMATION

Part No.	Description
L096A **	LS-6A U/UTP Cat.6A PVC CM Green 305m/Box
L096AR **	LS-6A U/UTP Cat.6A PVC CMR Brown 305m/ Box
L096AP **	LS-6A U/UTP Cat.6A PVC CMP Red 305m/ Box
L096AL **	LS-6A U/UTP Cat.6A LSZH Green 305m/ Box

LAN CABLE Category 6A Shield



Category 6A F/FTP 10G Cable SHIEDED COPPER CABLING SYSTEM

DESCRIPTION	SPECIFICATION																
<p>LANSAN Category 6A F/FTP 10G Cable support high speed Enterprise and Data Center applications</p> <p>Double Shield Structure Provide better Noise Protection to against Alien Crosstalk.</p> <p>Combined with Shield Keystone, Patch Cords and Patch Panel, it provides excellent compatible performance.</p>	<table> <tr> <td>Conductor</td><td>23AWG, Solid Copper</td></tr> <tr> <td>Insulation</td><td>Foamed Polyethylene (FPE)</td></tr> <tr> <td>Shield</td><td>Individual / Overall Aluminum Foil / Drain wire</td></tr> <tr> <td>Outer Sheath</td><td>Low Smoke Zero Halogen (LSZH)</td></tr> <tr> <td>Installation Temperature</td><td>0°C ~ +50°C</td></tr> <tr> <td>Operating Temperature</td><td>-20°C ~ +60°C</td></tr> <tr> <td>Installation Min Bend Radius</td><td>70mm</td></tr> <tr> <td>Operating Min Bend Radius</td><td>40mm</td></tr> </table>	Conductor	23AWG, Solid Copper	Insulation	Foamed Polyethylene (FPE)	Shield	Individual / Overall Aluminum Foil / Drain wire	Outer Sheath	Low Smoke Zero Halogen (LSZH)	Installation Temperature	0°C ~ +50°C	Operating Temperature	-20°C ~ +60°C	Installation Min Bend Radius	70mm	Operating Min Bend Radius	40mm
Conductor	23AWG, Solid Copper																
Insulation	Foamed Polyethylene (FPE)																
Shield	Individual / Overall Aluminum Foil / Drain wire																
Outer Sheath	Low Smoke Zero Halogen (LSZH)																
Installation Temperature	0°C ~ +50°C																
Operating Temperature	-20°C ~ +60°C																
Installation Min Bend Radius	70mm																
Operating Min Bend Radius	40mm																
FEATURES	STANDARDS COMPLIANCE																
<ul style="list-style-type: none"> * Independently tested and verified by ETL * Guaranteed to meet TIA 568 C.2 and ISO/IEC 11801 specifications * Double Shield Protection 	<ul style="list-style-type: none"> * TIA 568 C.2 * ISO 11801 CLASS EA * UL Listed 																

ORDERING INFORMATION

Part No.	Description
L096AF2 **	LS-6A F/FTP Cat.6A PVC CM Green 305m/Drum
L096ARF2 **	LS-6A F/FTP Cat.6A PVC CMR Brown 305m/Drum
L096APF2 **	LS-6A F/FTP Cat.6A PVC CMP Red 305m/Drum
L096ALF2 **	LS-6A F/FTP Cat.6A LSZH Green 305m/Drum

LAN CABLE Category 6 Unshield



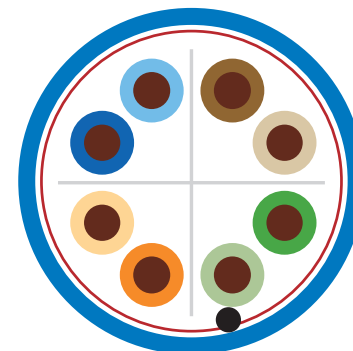
Category 6 U/UTP 250Mhz Cable UNSHIEDED COPPER CABLING SYSTEM

DESCRIPTION	SPECIFICATION
<p>LANSAN Category 6 U/UTP 250Mhz Cable be used to Upgrade Category 5E system provide higher transmission, at least twice than CAT5E.</p> <p>Center Cross design to against the NEXT and provide more stable performance.</p> <p>Big Pulling Hole Design allows installer to lay 10 Boxes in the meantime without jam issues.</p> <p>Combined with Un-Shield Keystone, Patch Cords and Patch Panel, it provides excellent compatible performance.</p>	<p>Conductor 23AWG, Solid Copper</p> <p>Insulation High Density Polyethylene (HDPE)</p> <p>Outer Sheath Polyvinyl Chloride (PVC)</p> <p>Installation Temperature 0°C ~ +50°C</p> <p>Operating Temperature -20°C ~ +60°C</p> <p>Installation Min Bend Radius 70mm</p> <p>Operating Min Bend Radius 40mm</p>
FEATURES	STANDARDS COMPLIANCE
<ul style="list-style-type: none"> * Independently tested and verified by ETL * Guaranteed to meet TIA 568 C.2 and ISO/IEC 11801 specifications * Center Cross Design * Big Pulling Hole Design 	<ul style="list-style-type: none"> * TIA 568 C.2 * ISO 11801 CLASS E * ETL approved * UL Listed

ORDERING INFORMATION

Part No.	Description
L096 **	LS-6 U/UTP Cat.6 PVC CM Blue 305m/Box
L096R **	LS-6 U/UTP Cat.6 PVC CMR Brown 305m/ Box
L096P **	LS-6 U/UTP Cat.6 PVC CMP Red 305m/ Box
L096L **	LS-6 U/UTP Cat.6 LSZH Green 305m/ Box

LAN CABLE Category 6 Shield



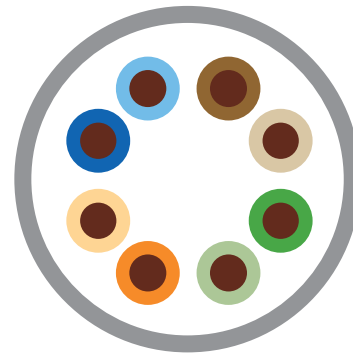
Category 6 F/UTP 250Mhz Cable SHIEDED COPPER CABLING SYSTEM

DESCRIPTION	SPECIFICATION
<p>LANSAN Category 6 F/UTP 250Mhz Cable be used to Upgrade Category 5E system provide higher transmission, at least twice than CAT5E.</p> <p>Center Cross design to against the NEXT and provide more stable performance.</p> <p>Big Pulling Hole Design allows installer to lay 10 Boxes in the meantime without jam issues.</p> <p>Combined with Shield Keystone, Patch Cords and Patch Panel, it provides excellent compatible performance.</p>	<p>Conductor 23AWG, Solid Copper</p> <p>Insulation High Density Polyethylene (HDPE)</p> <p>Shield Overall Aluminum Foil Tape / Drain Wire</p> <p>Outer Sheath Polyvinyl Chloride (PVC)</p> <p>Installation Temperature 0°C ~ +50°C</p> <p>Operating Temperature -20°C ~ +60°C</p> <p>Installation Min Bend Radius 70mm</p> <p>Operating Min Bend Radius 40mm</p>
FEATURES	STANDARDS COMPLIANCE
<ul style="list-style-type: none"> * Independently tested and verified by ETL * Guaranteed to meet TIA 568 C.2 and ISO/IEC 11801 specifications * Center Cross Design * Big Pulling Hole Design 	<ul style="list-style-type: none"> * TIA 568 C.2 * ISO 11801 CLASS E * ETL approved * UL Listed

ORDERING INFORMATION

Part No.	Description
L096F **	LS-6 F/UTP Cat.6 PVC CM Blue 305m/Drum
L096RF **	LS-6 F/UTP Cat.6 PVC CMR Brown 305m/Drum
L096PF **	LS-6 F/UTP Cat.6 PVC CMP Red 305m/Drum
L096LF **	LS-6 F/UTP Cat.6 LSZH Green 305m/Drum

LAN CABLE Category 5E Un-shield



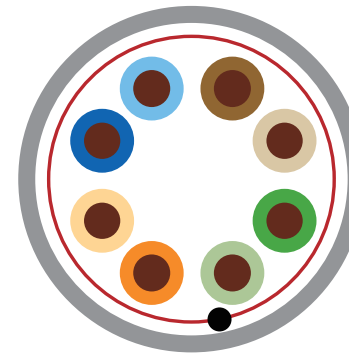
Category 5E U/UTP 100Mhz Cable UNSHIEDED COPPER CABLING SYSTEM

DESCRIPTION	SPECIFICATION
LANSAN Category 5 U/UTP 100Mhz Cable be used to Upgrade Category 5 system, provide higher transmission.	Conductor 24AWG, Solid Copper Insulation High Density Polyethylene (HDPE) Outer Sheath Polyvinyl Chloride (PVC)
Big Pulling Hole Design allows installer to lay 10 Boxes in the meantime without jam issues.	Installation Temperature 0°C ~ +50°C Operating Temperature -20°C ~ +60°C
Combined with Un-Shield Keystone, Patch Cords and Patch Panel, it provides excellent compatible performance.	Installation Min Bend Radius 70mm Operating Min Bend Radius 40mm
FEATURES	STANDARDS COMPLIANCE
<ul style="list-style-type: none"> * Independently tested and verified by ET * Guaranteed to meet TIA 568 C.2 and ISO/IEC 11801 specifications * Big Pulling Hole Design 	<ul style="list-style-type: none"> * TIA 568 C.2 * ISO 11801 CLASS D * UL Listed

ORDERING INFORMATION

Part No.	Description
L095E **	LS-5E U/UTP Cat.5E PVC CM Grey 305m/Box
L095ER **	LS-5E U/UTP Cat.5E PVC CMR Brown 305m/ Box
L095EP **	LS-5E U/UTP Cat.5E PVC CMP Red 305m/ Box
L095EL **	LS-5E U/UTP Cat.5E LSZH Green 305m/ Box

LAN CABLE Category 5E Shield

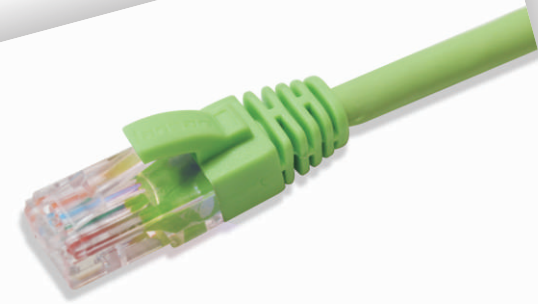


Category 5E F/UTP 100Mhz Cable SHIEDED COPPER CABLING SYSTEM

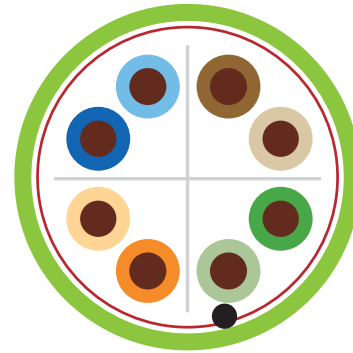
DESCRIPTION	SPECIFICATION
LANSAN Category 5 F/UTP 100Mhz Cable be used to Upgrade Category 5 system, provide higher transmission.	Conductor 24AWG, Solid Copper Insulation High Density Polyethylene (HDPE) Outer Sheath Polyvinyl Chloride (PVC)
Big Pulling Hole Design allows installer to lay 10 Boxes in the meantime without jam issues.	Installation Temperature 0°C ~ +50°C Operating Temperature -20°C ~ +60°C
Combined with Shield Keystone, Patch Cords and Patch Panel, it provides excellent compatible performance.	Installation Min Bend Radius 70mm Operating Min Bend Radius 40mm
FEATURES	STANDARDS COMPLIANCE
<ul style="list-style-type: none"> * Independently tested and verified by ET * Guaranteed to meet TIA 568 C.2 and ISO/IEC 11801 specifications * Big Pulling Hole Design 	<ul style="list-style-type: none"> * TIA 568 C.2 * ISO 11801 CLASS D * UL Listed

ORDERING INFORMATION

Part No.	Description
L095EF **	LS-5E F/UTP Cat.5E PVC CM Grey 305m/Drum
L095ERF **	LS-5E F/UTP Cat.5E PVC CMR Brown 305m/Drum
L095EPF **	LS-5E F/UTP Cat.5E PVC CMP Red 305m/Drum
L095ELF **	LS-5E F/UTP Cat.5E LSZH Green 305m/Drum



PATCH CORD Category 6A Un-shield



Category 6A F/UTP Patch Cord

UNSHIEDED COPPER CABLING SYSTEM

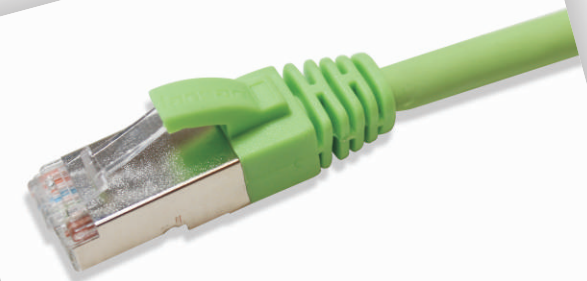
DESCRIPTION	SPECIFICATION														
LANSAN Category 6A F/UTP Patch Cords are made in flexible stranded conductor with Snag-less Booted Design, easy to insert and remove cables in high density applications. Combined with Un-Shield Keystone, LAN Cable and Patch Panel, it provides excellent compatible performance.	<table><tr><td>Conductor</td><td>26AWG, Stranded Copper</td></tr><tr><td>Insulation</td><td>Foamed Polyethylene (FPE)</td></tr><tr><td>Shield</td><td>Overall Aluminum Foil / Drain wire</td></tr><tr><td>Outer Sheath</td><td>Low Smoke Zero Halogen (LSZH)</td></tr><tr><td>Plug</td><td>Gold plated connector</td></tr><tr><td>Installation Temperature</td><td>0°C ~ +50°C</td></tr><tr><td>Operating Temperature</td><td>-20°C ~ +60°C</td></tr></table>	Conductor	26AWG, Stranded Copper	Insulation	Foamed Polyethylene (FPE)	Shield	Overall Aluminum Foil / Drain wire	Outer Sheath	Low Smoke Zero Halogen (LSZH)	Plug	Gold plated connector	Installation Temperature	0°C ~ +50°C	Operating Temperature	-20°C ~ +60°C
Conductor	26AWG, Stranded Copper														
Insulation	Foamed Polyethylene (FPE)														
Shield	Overall Aluminum Foil / Drain wire														
Outer Sheath	Low Smoke Zero Halogen (LSZH)														
Plug	Gold plated connector														
Installation Temperature	0°C ~ +50°C														
Operating Temperature	-20°C ~ +60°C														
FEATURES	STANDARDS COMPLIANCE														
<ul style="list-style-type: none">* Independently tested and verified by ETL* Guaranteed to meet TIA 568 C.2 and ISO/IEC 11801 specifications* Snag-less Protection Design* Multi-Color options available	<ul style="list-style-type: none">* TIA 568 C.2* ISO 11801 CLASS EA* ETL approved* UL Listed														

ORDERING INFORMATION

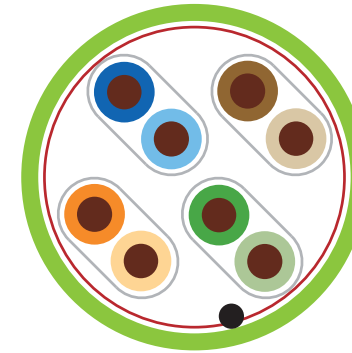
Part No.	Description
LC6AR-XXF**	LS-6A F/UTP Patch Cord PVC CMR ** XX M
LC6AP-XXF**	LS-6A F/UTP Patch Cord PVC CMP ** XX M
LC6AL-XXAF**	LS-6A F/UTP Patch Cord LSZH ** XX M

XX indicated to length, standard length 1m(01) 2m(02) 3m(03) 5m(05)
** indicated to color, if need other color or length, please indicate in order

WT GY BK RD YL GN BL



PATCH CORD Category 6A Shield



Category 6A F/FTP Patch Cord

SHIEDED COPPER CABLING SYSTEM

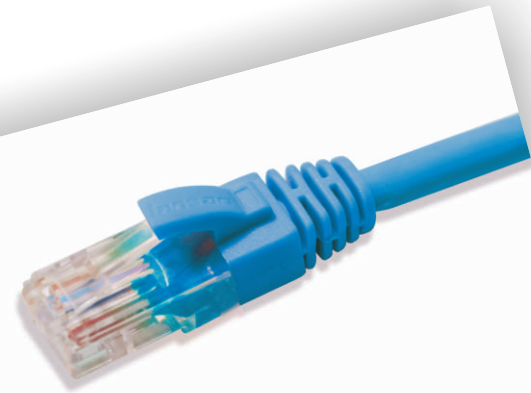
DESCRIPTION	SPECIFICATION														
LANSAN Category 6A F/FTP Patch Cords are made in flexible stranded conductor with Snag-less Booted Design, easy to insert and remove cables in high density applications. Combined with Shield Keystone, LAN Cable and Patch Panel, it provides excellent compatible performance.	<table><tr><td>Conductor</td><td>26AWG, Stranded Copper</td></tr><tr><td>Insulation</td><td>Foamed Polyethylene (FPE)</td></tr><tr><td>Shield</td><td>Individual / Overall Aluminum Foil / Drain wire</td></tr><tr><td>Outer Sheath</td><td>Low Smoke Zero Halogen (LSZH)</td></tr><tr><td>Plug</td><td>Gold plated connector</td></tr><tr><td>Installation Temperature</td><td>0°C ~ +50°C</td></tr><tr><td>Operating Temperature</td><td>-20°C ~ +60°C</td></tr></table>	Conductor	26AWG, Stranded Copper	Insulation	Foamed Polyethylene (FPE)	Shield	Individual / Overall Aluminum Foil / Drain wire	Outer Sheath	Low Smoke Zero Halogen (LSZH)	Plug	Gold plated connector	Installation Temperature	0°C ~ +50°C	Operating Temperature	-20°C ~ +60°C
Conductor	26AWG, Stranded Copper														
Insulation	Foamed Polyethylene (FPE)														
Shield	Individual / Overall Aluminum Foil / Drain wire														
Outer Sheath	Low Smoke Zero Halogen (LSZH)														
Plug	Gold plated connector														
Installation Temperature	0°C ~ +50°C														
Operating Temperature	-20°C ~ +60°C														
FEATURES	STANDARDS COMPLIANCE														
<ul style="list-style-type: none">* Independently tested and verified by ETL* Guaranteed to meet TIA 568 C.2 and ISO/IEC 11801 specifications* Snag-less Protection Design* Multi-Color options available	<ul style="list-style-type: none">* TIA 568 C.2* ISO 11801 CLASS EA* ETL approved* UL Listed														

ORDERING INFORMATION

Part No.	Description
LC6AF2R-XXF**	LS-6A F/FTP Patch Cord PVC CMR ** XX M
LC6AF2P-XXF**	LS-6A F/FTP Patch Cord PVC CMP ** XX M
LC6AF2L-XXF**	LS-6A F/FTP Patch Cord LSZH ** XX M

XX indicated to length, standard length 1m(01) 2m(02) 3m(03) 5m(05)
** indicated to color, if need other color or length, please indicate in order

WT GY BK RD YL GN BL



PATCH CORD Category 6 Un-shield



Category 6 U/UTP Patch Cord

UNSHIEDED COPPER CABLING SYSTEM

DESCRIPTION

LANSAN Category 6 U/UTP Patch Cords are made in flexible stranded conductor with Snag-less Booted Design, easy to insert and remove cables in high density applications.

Combined with Un-Shield Keystone, LAN Cable and Patch Panel, it provides excellent compatible performance.

SPECIFICATION

Conductor	24AWG, Stranded Copper
Insulation	High Density Polyethylene (HDPE)
Shield	Overall Aluminum Foil / Drain wire
Outer Sheath	Low Smoke Zero Halogen (LSZH)
Plug	Gold plated connector
Installation Temperature	0°C ~ +50°C
Operating Temperature	-20°C ~ +60°C

FEATURES

- * Independently tested and verified by ETL
- * Guaranteed to meet TIA 568 C.2 and ISO/IEC 11801 specifications
- * Snag-less Protection Design
- * Multi-Color options available

STANDARDS COMPLIANCE

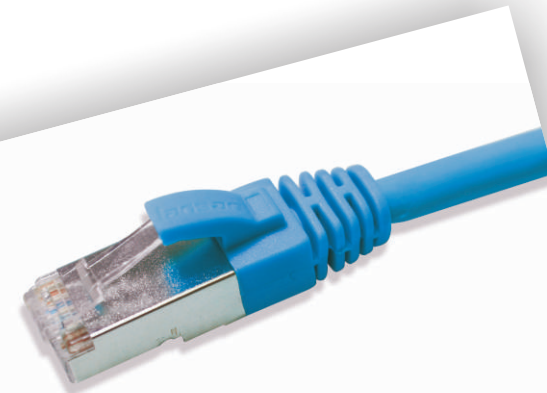
- * TIA 568 C.2
- * ISO 11801 CLASS D
- * ETL approved
- * UL Listed

ORDERING INFORMATION

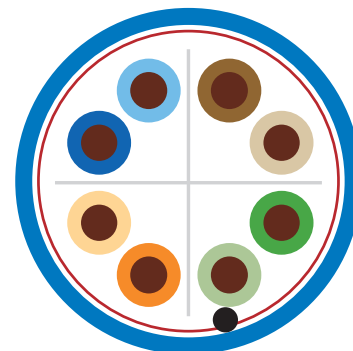
Part No.	Description
----------	-------------

LC6-XXF**	LS-6 U/UTP Patch Cord PVC CM ** XX M
LC6R-XXF**	LS-6 U/UTP Patch Cord PVC CMR ** XX M
LC6P-XXF**	LS-6 U/UTP Patch Cord PVC CMP ** XX M
LC6L-XXF**	LS-6 U/UTP Patch Cord LSZH ** XX M

XX indicated to length, standard length 1m(01) 2m(02) 3m(03) 5m(05)
** indicated to color, if need other color or length, please indicate in order



PATCH CORD Category 6 Shield



Category 6 F/UTP Patch Cord

SHIEDED COPPER CABLING SYSTEM

DESCRIPTION

LANSAN Category 6 F/UTP Patch Cords are made in flexible stranded conductor with Snag-less Booted Design, easy to insert and remove cables in high density applications.

Combined with Shield Keystone, LAN Cable and Patch Panel, it provides excellent compatible performance.

SPECIFICATION

Conductor	26AWG, Stranded Copper
Insulation	High Density Polyethylene (HDPE)
Shield	Overall Aluminum Foil Tape / Drain Wire
Outer Sheath	Polyvinyl Chloride (PVC)
Plug	Gold plated connector
Installation Temperature	0°C ~ +50°C
Operating Temperature	-20°C ~ +60°C

FEATURES

- * Independently tested and verified by ETL
- * Guaranteed to meet TIA 568 C.2 and ISO/IEC 11801 specifications
- * Snag-less Protection Design
- * Multi-Color options available

STANDARDS COMPLIANCE

- * TIA 568 C.2
- * ISO 11801 CLASS D
- * ETL approved
- * UL Listed

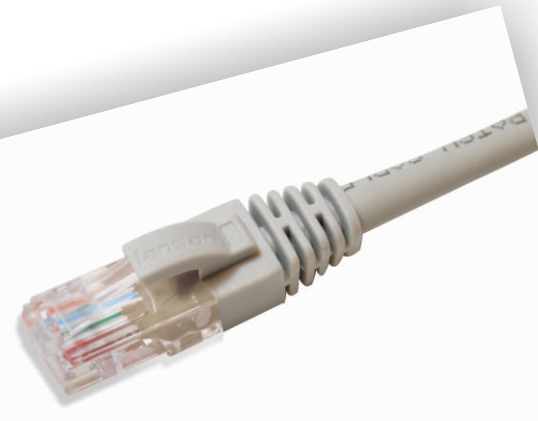
ORDERING INFORMATION

Part No.	Description
----------	-------------

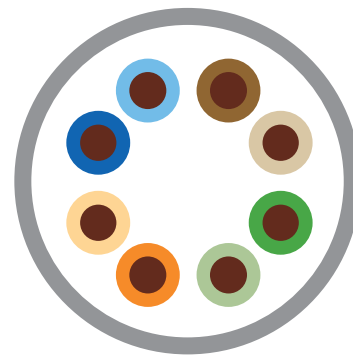
LC6F-XXF**	LS-6 F/UTP Patch Cord PVC CM ** XX M
LC6FR-XXF**	LS-6 F/UTP Patch Cord PVC CMR ** XX M
LC6FP-XXF**	LS-6 F/UTP Patch Cord PVC CMP ** XX M
LC6FL-XXF**	LS-6 F/UTP Patch Cord LSZH ** XX M

XX indicated to length, standard length 1m(01) 2m(02) 3m(03) 5m(05)
** indicated to color, if need other color or length, please indicate in order





PATCH CORD Category 5E Un-shield



Category 5E U/UTP Patch Cord

UNSHIEDED COPPER CABLING SYSTEM

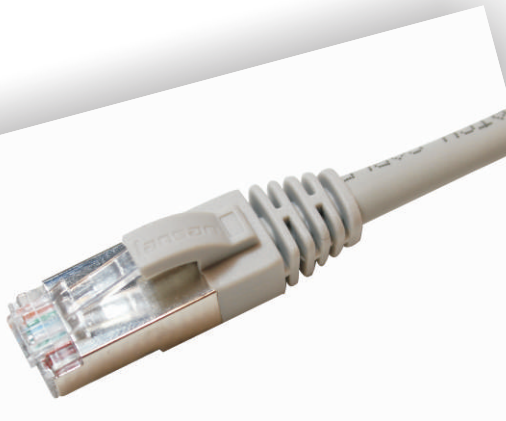
DESCRIPTION	SPECIFICATION	
LANSAN Category 5E U/UTP Patch Cords are made in flexible stranded conductor with Snag-less Booted Design, easy to insert and remove cables in high density applications. Combined with Un-Shield Keystone, LAN Cable and Patch Panel, it provides excellent compatible performance.	Conductor	24AWG, Stranded Copper
	Insulation	High Density Polyethylene (HDPE)
	Outer Sheath	Polyvinyl Chloride (PVC)
	Plug	Gold plated connector
	Installation Temperature	0°C ~ +50°C
	Operating Temperature	-20°C ~ +60°C
FEATURES	STANDARDS COMPLIANCE	
* Independently tested and verified by ETL * Guaranteed to meet TIA 568 C.2 and ISO/IEC 11801 specifications * Snag-less Protection Design * Multi-Color options available	* TIA 568 C.2	
	* ISO 11801 CLASS D	
	* ETL approved	
	* UL Listed	

ORDERING INFORMATION

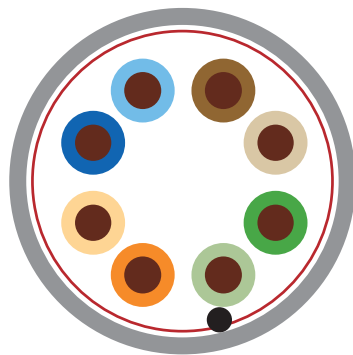
Part No.	Description
LC5E-XXF**	LS-5E U/UTP Patch Cord PVC CM ** XX M
LC5ER-XXF**	LS-5E U/UTP Patch Cord PVC CMR ** XX M
LC5EP-XXF**	LS-5E U/UTP Patch Cord PVC CMP ** XX M
LC5EL-XXAF**	LS-5E U/UTP Patch Cord LSZH ** XX M

XX indicated to length, standard length 1m(01) 2m(02) 3m(03) 5m(05)
** indicated to color, if need other color or length, please indicate in order

WT GY BK RD YL GN BL



PATCH CORD Category 5E Shield



Category 5E F/UTP Patch Cord

SHIEDED COPPER CABLING SYSTEM

DESCRIPTION	SPECIFICATION	
LANSAN Category 5E F/UTP Patch Cords are made in flexible stranded conductor with Snag-less Booted Design, easy to insert and remove cables in high density applications. Combined with Shield Keystone, LAN Cable and Patch Panel, it provides excellent compatible performance.	Conductor	26AWG, Stranded Copper
	Insulation	High Density Polyethylene (HDPE)
	Shield	Overall Aluminum Foil Tape / Drain Wire
	Outer Sheath	Polyvinyl Chloride (PVC)
	Plug	Gold plated connector
	Installation Temperature	0°C ~ +50°C
	Operating Temperature	-20°C ~ +60°C
FEATURES	STANDARDS COMPLIANCE	
* Independently tested and verified by ETL * Guaranteed to meet TIA 568 C.2 and ISO/IEC 11801 specifications * Snag-less Protection Design * Multi-Color options available	* TIA 568 C.2	
	* ISO 11801 CLASS D	
	* ETL approved	
	* UL Listed	

ORDERING INFORMATION

Part No.	Description
LC5EF-XXF**	LS-5E F/UTP Patch Cord PVC CM ** XX M
LC5EFR-XXF**	LS-5E F/UTP Patch Cord PVC CMR ** XX M
LC5EFP-XXF**	LS-5E F/UTP Patch Cord PVC CMP ** XX M
LC5EFL-XXAF**	LS-5E F/UTP Patch Cord LZSH ** XX M

XX indicated to length, standard length 1m(01) 2m(02) 3m(03) 5m(05)
** indicated to color, if need other color or length, please indicate in order

WT GY BK RD YL GN BL



KEYSTONE JACK Category 6A Un-shield

Cat 6A Un-Shield 180°

QUICK INSTALLATION SOLUTION

DESCRIPTION

LANSAN Shield Keystone Jack with Quick Tool design allows installer to entry cable in the most efficient way.

Combined with Shield LAN Cable, Patch Cords, and Patch Panel, it provides excellent compatible performance and extra dB value for full series cabling system.

FEATURES

- * Easy Wiring and Termination Design
- * Quick Installation Design
- Universal Design

STANDARDS COMPLIANCE

- * TIA 568 C.2
- * ISO 11801 CLASS EA
- * UL Listed
- * 10G BASE-T Networks supported

ELECTRICAL

Electrical Insulation Resistance : 500mΩ min.@ 100V DC
Dielectric Withstanding Voltage : 1000V D.C or A.C Peak Contact to Contact @ 60Hz for 1 minute

MECHANICAL

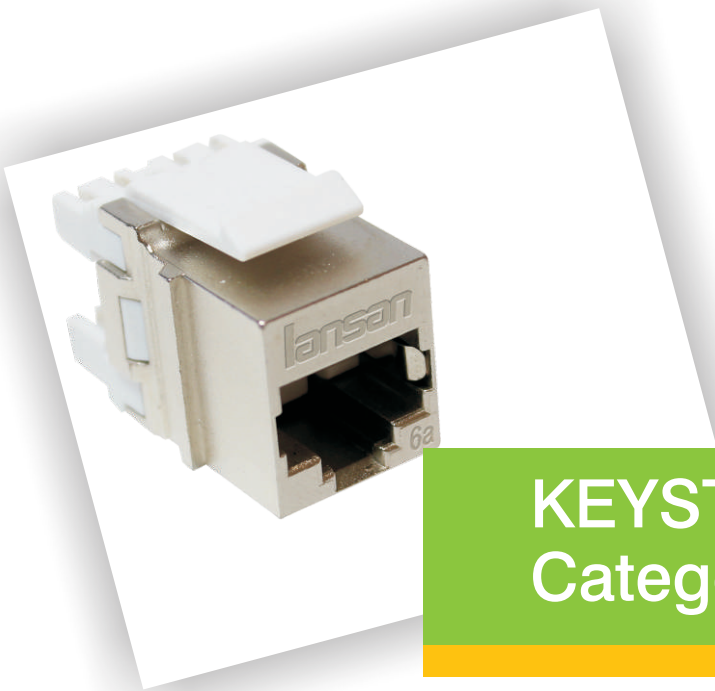
Insertion / Extraction Life : 750 Cycles Minimum
IDC Wire Gauge : 22 ~ 24 AWG

PHYSICAL

Housing : High-Impact, Flame-Retardant Plastic, UL 94V-0
Spring Wire : Phosphor Bronze Alloy Plated with 50 micro-inch of Gold
IDC : Phosphor Bronze Alloy with 100 micro-inch 100% Sn Alloy

ORDERING INFORMATION

Part No.	Description
LK6A-006A	LS-6A Cat.6A Keystone Jack, Un-shield 180 degree, white, Tool Type
LK6A-06A	LS-6A Cat.6A Keystone Jack, Un-shield 180 degree, white



KEYSTONE JACK Category 6A Shield

Cat 6A Shield 180°

QUICK INSTALLATION SOLUTION

DESCRIPTION

LANSAN Shield Keystone Jack with Quick Tool design allows installer to entry cable in the most efficient way.

Metal shell provides fully shield protection to avoid noise.

Combined with Shield LAN Cable, Patch Cords, and Patch Panel, it provides excellent compatible performance and extra dB value for full series cabling system.

FEATURES

- * Easy Wiring and Termination Design
- * Quick Installation Design
- Universal Design

STANDARDS COMPLIANCE

- * TIA 568 C.2
- * ISO 11801 CLASS EA
- * UL Listed
- * 10G BASE-T Networks supported

ELECTRICAL

Electrical Insulation Resistance : 500mΩ min.@ 100V DC
Dielectric Withstanding Voltage : 1000V D.C or A.C Peak Contact to Contact @ 60Hz for 1 minute

MECHANICAL

Insertion / Extraction Life : 750 Cycles Minimum
IDC Wire Gauge : 22 ~ 24 AWG

PHYSICAL

Housing : High-Impact, Flame-Retardant Plastic, UL 94V-0
Spring Wire : Phosphor Bronze Alloy Plated with 50 micro-inch of Gold
IDC : Phosphor Bronze Alloy with 100 micro-inch 100% Sn Alloy

ORDERING INFORMATION

Part No.	Description
LK6AS-006A	LS-6A Cat.6A Keystone Jack, Shield 180 degree, white, Tool Type
LK6AS-06A	LS-6A Cat.6A Keystone Jack, Shield 180 degree, white



KEYSTONE JACK Category 6 Un-shield

Cat 6 Un-Shield 180°

QUICK INSTALLATION SOLUTION

DESCRIPTION	FEATURES
<p>LANSAN Shield Keystone Jack with Quick Tool design allows installer to entry cable in the most efficient way.</p> <p>Combined with Shield LAN Cable, Patch Cords, and Patch Panel, it provides excellent compatible performance and extra dB value for full series cabling system.</p>	<ul style="list-style-type: none">* Easy Wiring and Termination Design* Quick Installation DesignUniversal Design
	STANDARDS COMPLIANCE
	<ul style="list-style-type: none">* TIA 568 C.2* ISO 11801 CLASS E* UL Listed

ELECTRICAL
Electrical Insulation Resistance : 500mΩ min.@ 100V DC Dielectric Withstanding Voltage : 1000V D.C or A.C Peak Contact to Contact @ 60Hz for 1 minute

MECHANICAL
Insertion / Extraction Life : 750 Cycles Minimum IDC Wire Gauge : 22 ~ 24 AWG

PHYSICAL
Housing : High-Impact, Flame-Retardant Plastic, UL 94V-0 Spring Wire : Phosphor Bronze Alloy Plated with 50 micro-inch of Gold IDC : Phosphor Bronze Alloy with 100 micro-inch 100% Sn Alloy

ORDERING INFORMATION

Part No.	Description
LK6-006	LS-6 Cat.6 Keystone Jack, Un-shield 180 degree, white, Tool Type
LK6-06	LS-6 Cat.6 Keystone Jack, Un-shield 180 degree, white



KEYSTONE JACK Category 6 Shield

Cat 6 Shield 180°

QUICK INSTALLATION SOLUTION

DESCRIPTION	FEATURES
<p>LANSAN Shield Keystone Jack with Quick Tool design allows installer to entry cable in the most efficient way.</p> <p>Metal shell provides fully shield protection to avoid noise.</p> <p>Combined with Shield LAN Cable, Patch Cords, and Patch Panel, it provides excellent compatible performance and extra dB value for full series cabling system.</p>	<ul style="list-style-type: none">* Easy Wiring and Termination Design* Quick Installation DesignUniversal Design
	STANDARDS COMPLIANCE
	<ul style="list-style-type: none">* TIA 568 C.2* ISO 11801 CLASS E* UL Listed

ELECTRICAL
Electrical Insulation Resistance : 500mΩ min.@ 100V DC Dielectric Withstanding Voltage : 1000V D.C or A.C Peak Contact to Contact @ 60Hz for 1 minute

MECHANICAL
Insertion / Extraction Life : 750 Cycles Minimum IDC Wire Gauge : 22 ~ 24 AWG

PHYSICAL
Housing : High-Impact, Flame-Retardant Plastic, UL 94V-0 Spring Wire : Phosphor Bronze Alloy Plated with 50 micro-inch of Gold IDC : Phosphor Bronze Alloy with 100 micro-inch 100% Sn Alloy

ORDERING INFORMATION

Part No.	Description
LK6S-006	LS-6 Cat.6 Keystone Jack, Shield 180 degree, white, Tool Type
LK6S-06	LS-6 Cat.6 Keystone Jack, Shield 180 degree, white



KEYSTONE JACK Category 5E Un-shield

Cat 5E Un-Shield 180°

QUICK INSTALLATION SOLUTION

DESCRIPTION

LANSAN Un-Shield Keystone Jack with Quick Tool design allows installer to entry cable in the most efficient way.

Combined with Un-Shield LAN Cable, Patch Cords, and Patch Panel, it provides excellent compatible performance and extra dB value for full series cabling system.

FEATURES

- * Easy Wiring and Termination Design
- * Quick Installation Design
- Universal Design

STANDARDS COMPLIANCE

- * TIA 568 C.2
- * ISO 11801 CLASS D
- * UL Listed

ELECTRICAL

Electrical Insulation Resistance : 500mΩ min.@ 100V DC
Dielectric Withstanding Voltage : 1000V D.C or A.C Peak Contact to Contact @ 60Hz for 1 minute

MECHANICAL

Insertion / Extraction Life : 750 Cycles Minimum
IDC Wire Gauge : 22 ~ 24 AWG

PHYSICAL

Housing : High-Impact, Flame-Retardant Plastic, UL 94V-0
Spring Wire : Phosphor Bronze Alloy Plated with 50 micro-inch of Gold
IDC : Phosphor Bronze Alloy with 100 micro-inch 100% Sn Alloy

ORDERING INFORMATION

Part No.	Description
LK5E-005E	LS-5E Cat.5E Keystone Jack, Un-shield 180 degree, white, Tool Type
LK5E-05E	LS-5E Cat.5E Keystone Jack, Un-shield 180 degree, white



KEYSTONE JACK Category 5E Shield

Cat 5E Shield 180°

QUICK INSTALLATION SOLUTION

DESCRIPTION

LANSAN Shield Keystone Jack with Quick Tool design allows installer to entry cable in the most efficient way.

Metal shell provides fully shield protection to avoid noise.

Combined with Shield LAN Cable, Patch Cords, and Patch Panel, it provides excellent compatible performance and extra dB value for full series cabling system.

FEATURES

- * Easy Wiring and Termination Design
- * Quick Installation Design
- Universal Design

STANDARDS COMPLIANCE

- * TIA 568 C.2
- * ISO 11801 CLASS D
- * UL Listed

ELECTRICAL

Electrical Insulation Resistance : 500mΩ min.@ 100V DC
Dielectric Withstanding Voltage : 1000V D.C or A.C Peak Contact to Contact @ 60Hz for 1 minute

MECHANICAL

Insertion / Extraction Life : 750 Cycles Minimum
IDC Wire Gauge : 22 ~ 24 AWG

PHYSICAL

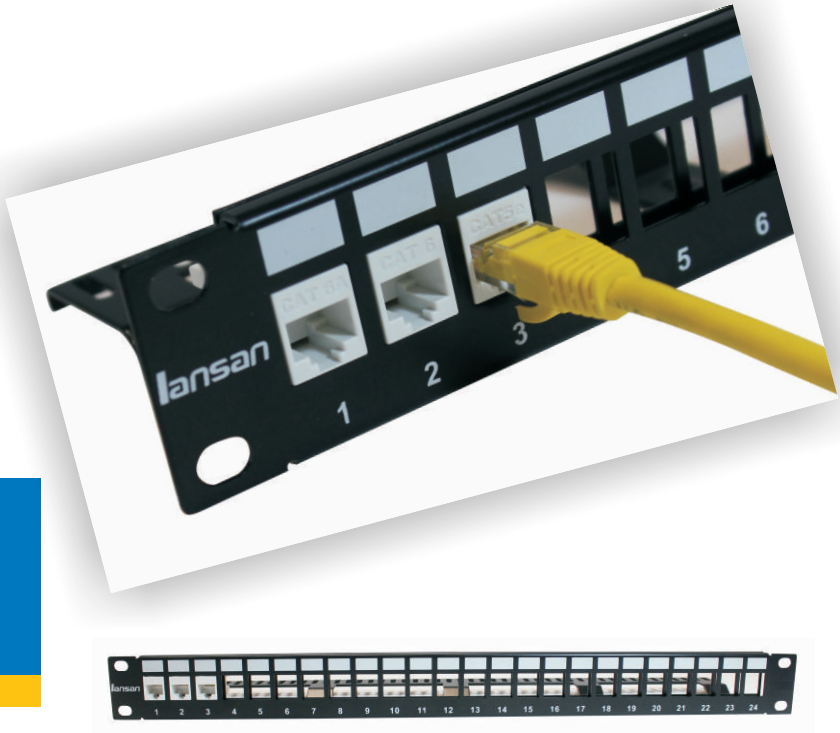
Housing : High-Impact, Flame-Retardant Plastic, UL 94V-0
Spring Wire : Phosphor Bronze Alloy Plated with 50 micro-inch of Gold
IDC : Phosphor Bronze Alloy with 100 micro-inch 100% Sn Alloy

ORDERING INFORMATION

Part No.	Description
LK5ES-005E	LS-5E Cat.5E Keystone Jack, Shield 180 degree, white, Tool Type
LK5ES-05E	LS-5E Cat.5E Keystone Jack, Shield 180 degree, white

PATCH PANEL

Un-shield



Un-Shield Blank Patch Panel

UNSHIEDED COPPER CABLING SYSTEM

DESCRIPTION
LANSAN Un-Shield Blank Patch Panel with Quick Tool design allows installer to install in the most efficient way.
It is compatible with full series keystone jack, included normal type and Quick tool type.
Combined with Un-Shield LAN Cable, Patch Cords, and Keystone Jack, it provides excellent compatible performance and extra dB value for full series cabling system.

FEATURES
<ul style="list-style-type: none"> * Quick Installation Design * Full Series Keystone Jack supported * Back Frame for management
STANDARDS COMPLIANCE
<ul style="list-style-type: none"> * TIA 568 C.2 * ISO 11801 * UL Listed

ORDERING INFORMATION

Part No.	Description
LHD6A24 LHD024	LS-6A 1HU Cat.6A Panel RJ45 Unshielded 24P 1HU Blank Panel 24P
LHD624 LHD024	LS-6 1HU Cat.6 Panel RJ45 Unshielded 24P 1HU Blank Panel 24P
LHD5E24 LHD024	LS-5E 1HU Cat.5E Panel RJ45 Unshielded 24P 1HU Blank Panel 24P



PATCH PANEL

Shield

Shield Blank Patch Panel

SHIEDED COPPER CABLING SYSTEM

DESCRIPTION
LANSAN Shield Blank Patch Panel with Quick Tool design allows installer to install in the most efficient way.
It is compatible with full series keystone jack, included normal type and Quick tool type.
Combined with Shield LAN Cable, Patch Cords, and Keystone Jack, it provides excellent compatible performance and extra dB value for full series cabling system.

FEATURES
<ul style="list-style-type: none"> * Quick Installation Design * Full Series Keystone Jack supported * Back Frame for management
STANDARDS COMPLIANCE
<ul style="list-style-type: none"> * TIA 568 C.2 * ISO 11801 * UL Listed

ORDERING INFORMATION

Part No.	Description
LHD6A24S LHD024S	LS-6A 1HU Cat.6A Panel RJ45 Shielded 24P 1HU Blank Panel Shield 24P
LHD624S LHD024S	LS-6 1HU Cat.6 Panel RJ45 Shielded 24P 1HU Blank Panel Shield 24P
LHD5E24S LHD024S	LS-5E 1HU Cat.5E Panel RJ45 Shielded 24P 1HU Blank Panel Shield 24P

COPPER SYSTEM SOLUTION

Angled Faceplate



- * Angled Design
- * Dust Cover
- * Concise Identify
- * Universal Size



DESCRIPTION

LANSAN Angled Faceplate, has dust cover and angled design applied in work area with standard size 86x86 and compatible with full series LANSAN keystone jacks.

ORDERING INFORMATION

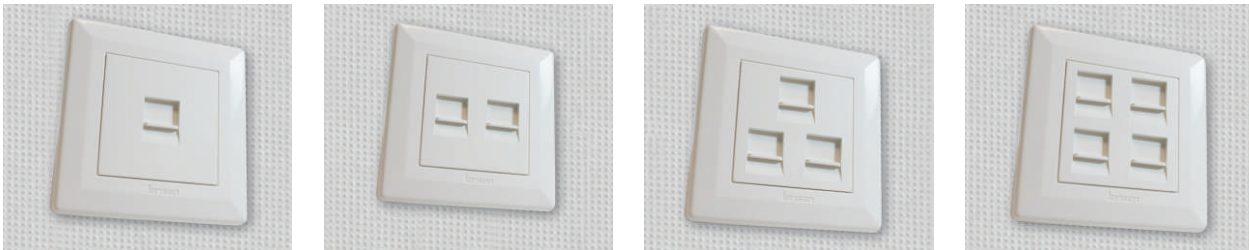
Part No.	Description
LFP01	86X86 45degree Inner White 1P
LFP02	86X86 45degree Inner White 2P
LFP03	86X86 45degree Outer White 1P
LFP04	86X86 45degree Outer White 2P

COPPER SYSTEM SOLUTION

Flat Faceplate



- * Dust Cover
- * Concise Identify
- * Universal Size



DESCRIPTION

LANSAN Flat Faceplate, has dust cover and flat design applied in work area with standard size 86x86 and compatible with full series LANSAN keystone jacks.

ORDERING INFORMATION

Part No.	Description
LFP001	86X86 Flat White 1P
LFP002	86X86 Flat White 2P
LFP003	86X86 Flat White 3P
LFP004	86X86 Flat White 4P

JOIN US

LANSAN is looking for Distributors/Reseller in global market, provides you professional structured cabling system consulting service for project or products.

- * 15 Years Warranty
- * Installer Course Training
- * Price Protection agreement

Be a distributor, please contact at info@lansancable.net



©Copyright LANSAN International Limited, 2013. All rights reserved. All unauthorized quotation and reproduction is forbidden except for brief examples used in reviews of this work by periodical publications where the source of information is credited to LANSAN, or the reproduction of this material for the purpose of preparing specifications and/or bids in which LANSAN products are indicated. To request permission, please contact LANSAN.

Information in this catalog is provides as a guide to product selection and is believed to be correct at the of publication.

CONTACT US



International Office

- Singapore
sg@lansancable.net
- Malaysia
my@lansancable.net
- Philippines
ph@lansancable.net
- Russia
ru@lansancable.net

Headquarters

- Shenzhen
+86 755 8429 2227
info@lansancable.net